

LSC

NEWSLETTER



LSC

August 2020 | Issue 445

THIS MONTH:
SALTO NEO CYLINDER - POWERED TO DO IT ALL
NEW NEPTUNE MATT BLACK EXIT BUTTONS
BACK TO WORK WITH SILCA

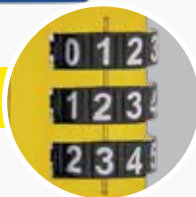


Security Tech Germany

Keyless and hassle-free!



EXTRA - LARGE NUMBER DIALS!



EASY TO READ COMBINATION PADLOCKS

14440 / 14430

New from ABUS the 144 Series combination padlocks with easy to read extra-large number dials. White numbers on black wheels makes them easy to read & use, great for the elderly, people with glasses or use in low light. Suitable for lockers, luggage, cash boxes & cupboards.

- Solid aluminium lock body
- Lightweight
- Easier to use due to extra-large number dials
- Convenient keyless locking
- 144/30 3 digit resettable combination
- 144/40 4 digit resettable combination
- Available in blue, yellow, green, orange, red, black & silver.
- Boxed or display pack

**LOVE IT?
LOCK IT**

Get ready for travel after lockdown



GET READY FOR TRAVEL

620TSA192

New from ABUS combination luggage straps. With a user settable 3 digit combination code, and easily identifiable colours, these straps keep your luggage secure.

- Individually resettable 3-digit code
- Address label included
- Total length of luggage strap - 192 cm, adjustable for different size luggage
- Ideal for journeys to & from the USA
- Opening indicator shows the luggage strap was opened by a TSA key
- Available in identifiable colours: black, blue, green, red
- Supplied carded

**PRECISION
GERMAN
ENGINEERING**

dormakaba

2 HOUR
FIRE RATED

BLUETOOTH

TOUCH
KEYPADBATTERY
POWERED

DKM5BLEMB [Black finish]



Also Available:
DKM5BLEMB
[Nickel
Black Finish
(Silver Trim)]

M5 SERIES DIGITAL SMART LOCKS

Change the way you think about home security and upgrade to a dormakaba digital door lock with the new M Series BLE smart locks. Allows you to unlock your door with a PIN, an RFID Card/Fob, a key or a Smart phone via Bluetooth.

Designed with elegance, and matched with the convenience of the smart features and functions whilst not compromising on security, reliability and performance. Gives you the ultimate control of your home security.

Bluetooth feature:

The M Series as standard offers Bluetooth features that provide the ability to unlock your door, retrieve data logs and more all from your smart phone via the dormakaba smart lock app (iOS & Android)

Remote Key Sharing providing time sensitive remote access:

In Bluetooth mode, the dormakaba Smart lock app allows the administrator to generate a pin code for a visitor/short term stay guest according to specific time periods. These can then be shared via multiple methods of media, such as email or text messages.

Peace of mind with Security assured:

No need to add additional locking devices to the door. The M Series is supplied as standard with the Australian style dormakaba MS2602 Series mortice lock providing the reassurance in knowing that by exceeding the highest levels of Australian standard for both mechanical security and durability (AS4145.2) the M Series is truly the best solution for any digital locking solution.



2020 | 1ST FINALIST

JOEL GURNEY

JG LOCK SAFE & SECURITY | NSW



Please provide a short personal biography about yourself.

My name is Joel Gurney, I am 24 years old from Lithgow NSW and owner of JG Lock Safe & Security. I started the business in 2017 and now employ 4 staff including 2 qualified tradesman, a first year apprentice and a receptionist. We have 2 vans on the road and a retail shop.

I always envisioned owning my own company right from the day I started as a Locksmith Apprentice when I was 16 years old. It has had its challenges but it has made me mature extremely quickly!

In 2019 my partner and I purchased our dream home and we recently welcomed our beautiful little baby girl into the world in June this year.

What do you most enjoy about your work as a locksmith?

I enjoy the challenges our industry offers and how it has evolved over the past few years into electronic security.

Locksmithing is a trade where you never stop learning as there is always something new.

I also enjoy the feeling of being able to help

someone in a bad situation, and provide customers with peace of mind security.

What key issues do you think will affect the locksmith industry in the coming decade and how do you think these should be approached?

The issues that our industry is currently facing is a large amount of suppliers selling cheap products and small handy men business performing unqualified work. This can make work for Locksmiths frustrating and trying to justify our line of work to the clients.

Ways we could fix this would be crack down on products that don't meet our standards, make these products obsolete or unavailable in the Australian market for purchase. I'd like to standardise Locksmithing as a trade required for fitting door furniture & gaining entry to locks and/or performing Locksmith duties.

What does winning the award of 'Australia's Best Young Locksmith' mean to you?

I believe I should be considered as Australia's best young locksmith because of my achievements over to past few years & my continued drive to improve myself, my company & this industry.

Sponsored by:



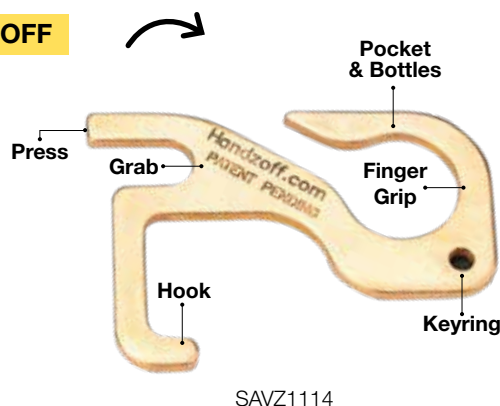
suttontools



PRODUCT SPOTLIGHT

KEEP YOUR HANDS OFF GERMY SURFACES WITH HANDZOFF

Made from recycled brass with a 60% copper content, the cool new Handzoff keyring is well designed, smooth, slick and allows you to press, grab, hook & grip multiple surfaces. Brass with a high copper content has a natural antimicrobial property, and 99.9% of most germs will reduce by 99% within 2 hours. Ideal for apartment or city dwellers who face having to touch multiple common surfaces like common entry doors or lift buttons.



Stock up now!



ABUS 83/55 Etching now available!

NEW ABUS 83/55 ETCHING

Secure more business with FREE advertising LSC can now etch the ABUS 83/55 hardened steel body padlocks. Get your business name out there. Enjoy the benefits of LSC's high quality precision laser etching.

For new or existing etched customers. Talk to your Account Manager today

**8355NLPETCH ABUSP/LOCK
*LASER ETCHED BY LSC**

STAY UP TO DATE WITH PROMASTER 8

Make sure you stay up to date with all of the new features and functionality that's being released in Promaster8 by subscribing to the automated update notification service WH-Software run.

Customers are often unaware of new, useful, interesting and highly beneficial functionality enhancements that are regularly made to ProMaster8.

The update notifications are limited in quantity, and will advise of important updates that add or enhance features only, or address critical functionality improvements. We promise there will be no spam!



You can subscribe to a free, non-Spam notification service by sending an email to notify@whsoftware.com - in the subject line just write SUBSCRIBE PM8.



FREE DELIVERY!* for all orders over \$150 *Exclusions apply.





NEW OEM LOOKALIKE FROM SILCA

Silca OEM lookalike remote keys are packaged individually in a plastic clamshell for easy identification and hook display. They are programmable with SMART Pro or similar.



Suit Nissan

SNSN14R14

- 2 button fixed blade remote key
- NSN14
- ID46 transponder



Suit VW

SHU66S20

- 3 button slot key
- Emergency blade HU66 included
- ID48-A1 transponder



Suit Renault

SVA150S19

- 3 button slot key
- Emergency blade VA150 included
- ID46 transponder

18

Tom Stokes from LSC talks to Jim Fisher from CLASS in Canberra about ProMaster8

CLASS are a widely regarded, large, professional locksmith in Canberra servicing a wide range of commercial, residential and government clients.



Tom Stokes: Jim, thanks for talking to me, when did you start with ProMaster8?

Jim Fisher: CLASS Locksmiths has been using PM8 since April 2019.

Tom Stokes: Why did you decide to upgrade?

Jim Fisher: We wanted to master key more efficiently than ever, and we know that PM8 will work with the latest Windows operating systems now and well into the future.

Tom Stokes: How was the upgrade process?

Jim Fisher: The upgrade process was easy for us. WH Software provides an Upgrade Guide for PM7 Users which details the steps required to install PM8 & convert your PM7 databases. Support was available from both WH Software & LSC, and both helped ensure a successful transition to PM8. We found the new help menu is awesome. There is now a subscription service for update notifications so you can use any new features as soon as they are available.

Tom Stokes: How did your team take to it?

Jim Fisher: Our existing users of PM7 found transitioning to PM8 is easy as the software layout is similar to PM7. However, PM8 has many more features and capability than its predecessor.

Tom Stokes: What about you, you're the admin, was that easy to migrate?

Jim Fisher: User setup is streamlined with User Groups

and as the system administrator, I can manage many tasks from my own logon instead of having to log on as admin which was fiddly.

Tom Stokes: What are a few of the new features you most like?

Jim Fisher: System signatories are now shown as soon as the system is opened. In fact, this screen shows much more info than PM7 does and you can get to the relevant part of the software by clicking on the info displayed. System alerts is a new feature which can be used to provide an alert each time the system is opened, or after a specified date. We use this to remind us to check contract pricing for customers on long term contracts with an annual review period.

Tom Stokes: So overall it's easier?

Jim Fisher: Searching in key and door lists is easier with customisable searching for each field, and the keying matrix now shows changes made since loading the screen and alerting you to doors which have been made already to minimise the risk of accidentally modifying manufactured doors.

Tom Stokes: Thanks Jim! Nice chat. If you're still using an outdated version of Australia's best masterkeying software, talk to your Account Manager about how LSC can assist you to stay current and masterkey more efficiently!



LSC

There is 1.3 billion vehicles globally

ONE STOP SHOP

We provide the full automotive solution



BDS



ADVANCED
DIAGNOSTICS

TECHED



TRANSPONDER
MAKER PRO

*19.8 million registered motor vehicles in Australia
with an average age of vehicle just over 10.3 years.*



Online information databases, Transponder read / write tools, Key cutting machinery, Shells, Blanks, Transponders, OEM lookalike keys and aftermarket remotes, Diagnostic programming tools, Telephone technical support & training.



CLICK&COLLECT Free pick-up from our branches

LSC



BACK TO WORK WITH



Bravo Professional Key Machine

In any key cutting location, a reliable, durable, accurate duplicator is the cornerstone of your operation.

Is your duplicator up to the task?

The Silca Bravo Professional is widely recognised as the industry benchmark for this core requirement of any locksmith business.

If your machine is fiddly, uncomfortable, inaccurate, noisy or just plain untrustworthy, now is the time to replace it with one you can trust. Featuring a wide and heavy footprint, four way jaws allow you to securely grip just about any inline key on the planet for smooth, accurate, safe and reliable copy production.

Ticking all of the OHS boxes, the integrated safety features won't annoy, but they'll keep you and your workers safe from cuts and swarf. The jaws have an easy release mechanism, and their smooth corners won't cut your fingers. The patented clutching jaw clamp won't strip the stud thread yet grips any kind of key tight for a spot-on cut.

Designed to be used hundreds of times per day and with a lifetime of many years, can you run the risk your core operational requirement is compromised by an old, inaccurate or unreliable duplicator?

SD832450ZB

**SPECIAL
BONUS**
1000 FREE
Coined
LW4 Keys





Lancer Plus Key Machine

Long considered the benchmark for bit and mortice type keys, the Silca Lancer Plus is a lifetime purchase, it's so well engineered and reliable you can depend on it every day.

Special extendable head support clamps allow even the longest of keys to be securely held to prevent chatter when cutting.

The unique 'top-hat' cutter allows you to cut up and down and 'around' side wards without removing the key from the clamp, making this a smooth and easy process.

The finger-operated trigger aids safety and means if you let go the machine stops.

The direct-drive gearbox means power from the motor is transferred directly to the cutting shafts on both the main and auxiliary cutters, powering through even the toughest of keyblanks.

SD810905ZB

Matrix One Key Machine

Quickly and easily tackle those oddball track and dimple keys which are becoming more and more common.

An end-milling and dimple key duplicator is an indispensable part of any locksmithing operation, they're just so handy to have around, and you'll find a use for it again and again.

The Matrix One includes Silca's electronic gaging system allowing you to set the Z axis with total confidence.

Smooth slide-roller bearing carriages ensure perfect accuracy, and the cutter and tracer don't vibrate or induce inaccuracies when cutting.

Ergonomic controls allow a firm and comfortable grip, letting you cut like a pro and get the job done the first time every time. The integrated tool drawer keeps everything tidy and in a safe place.

SD843298ZB



FREE DELIVERY!* for all orders over \$150 *Exclusions apply.



ADI LOCK BOLT SL5 SLIMLINE SERIES

The ADI SL5 narrow style heavy duty locking bolt is the industry standard. Suitable for securing shop fronts, warehouses, hotels, community recreation areas, storage facilities and garages. Idea solution for narrow style doors or gates.



**SL5 Satin Chrome Slimline
Lock Bolt 44143000**

- Can be locked in open or closed position
- Hardened 7"bolt
- Suitable for aluminium or timber
- Also suitable for swing or sliding doors
- Compatible with most restricted key systems
- Supplied with mounting template and all fixing componentry
- Extended locking bolts and concealed fixing kits available.



**SL5 Satin Chrome Slimline
Lock Bolt Less Cylinder 44143005**

- Can be locked in open or closed position
- Hardened 7"bolt
- Suitable for aluminium or timber
- Also suitable for swing or sliding doors
- Compatible with most restricted key systems
- Supplied with mounting template and all fixing componentry
- Extended locking bolts and concealed fixing kits available.



antibacterial

DANIEL WADDELL FROM LSC TALKS TO VINCE FROM LOCKSOLID SECURITY ABOUT PUREHOLD

Vince Frisina from Locksolid Security is Sydney based and was one of the first Locksmiths to purchase Purehold products.

Daniel Waddell: What was your initial interest in the Purehold products?

Vince Frisina: I saw an opportunity to advise my customers during these times. My clients found they "needed" something like this to re-open & also piece of mind.

DW: What immediate benefits can Purehold provide?

VF: Improve hygiene in the workplace, reduce possible staff/customer sickness and good business practise.

DW: Was the product easy to explain to your customer?

VF: Yes, I sent an initial email. My customers were immediately interested about Purehold. Explaining the

product and what it does was very easy. Maintenance free and possible to install themselves.

DW: Which products did you purchase?

VF: PSLEVERRTD, PSPUSH2 and PSPULL.

DW: Where would you install Purehold products?

VF: Entry exit points, staff rooms and bathrooms. All sorts of businesses, but I'm thinking gyms, schools, nursing homes, hospitals and clubs. Virtually any size business, so a lot of my existing customers.

DW: Thanks Vince, great chat!

If you are looking to help your customers transition to reopening their businesses in COVID-19 times, Purehold's antibacterial products may be just the solution you and your customers are looking for.



Visit lsc.com.au for the full range of Purehold products available.

BORG KEYPADS ONLY

When you need a mechanical digital solution for a mortice lock you can order just the BORG keypad & adaptor plate. No need to order a complete lock. Only order what you need, save money & reduce waste.



5401 ECP Series Digital Keypad Only

BL5401KSSDDAECP

easi-code pro



2201 ECP Series Digital Keypad Only

BL2201KSCECP

easi-code pro



Visit lsc.com.au for the full range of Borg keypads & adaptor plates available.



locking for life



BRAVA OL SERIES LOCKS

The most comprehensive cabinet and joinery locking solutions for the Locksmith Professional. Locking cupboards, cabinets, drawers, hatches and showcases? BRAVA OL Series Locks has a product for you.

- The easiest to rekey cupboard lock on the market
- Compatible with most restricted keying systems
- All locks use an 8221 (PD) cylinder
- Superior materials used
- Longest bolt throw (25mm) on the market for cupboards
- Supplied less cylinder
- Available satin chrome and polished brass
- Widest range of spare parts and accessories

locking left or right



Cupboard Lock

SC BR700LCASC
PB BR700LCAPB

locking up, down, left or right



Latching Cupboard Lock

SC BRL78VLCASC
PB BRL78VLCAPB

locking up only



Dead-Latching Cupboard Lock

SC BR850LCASC
PB BR850LCAPB

locking up or down



Cupboard Lock

SC BR800LCASC
PB BR800LCAPB



CLICK & COLLECT Free pick-up from our branches



VERROO 12V SMART CONTROLLER

With the release of the Verroo 12v smart controller you can now enjoy all the convenience of easy and secure access with your existing electric strikes and maglocks. Verroo's intuitive and feature packed App will turn your electric lock into a smart device and give you control over who has access and when.

The Verroo 12v Smart Controller is a standalone 12 volt powered access control solution to be used in conjunction with most 12 volt strikes. A great option for many situations including common tenancy and building entry doors. *power supply and strike sold separately.



200012
2000121000
200012200

RMD 2000 Verroo Smart Controller, 30 users, 12v
RMD 2000 Verroo Smart Controller, 1000 users, 12v
RMD 2000 Verroo Smart Controller, 200 users, 12v



Visit lsc.com.au for the complete range of Verroo products.



ASSA ABLOY



ELECTRIC STRIKES

Characterised by their speed, durability and longevity, and backed by a 5-year manufacturers warranty, Lockwood Electric Strikes are a reliable choice for any electromechanical door system.



**ES9000 Series
Pre-Load Strike**

PA109001060



**ES2100 Series Door
Monitored Electric Strike**

PA102100000



**ES2000 Series
Monitored Electric Strike**

PAES2000



NEW MATT BLACK TOUCHLESS EXIT BUTTONS FROM NEPTUNE SECURITY PRODUCTS

Neptune Security Products have introduced a slick new range of Touchless Exit Buttons in Matt Black. The new range is available in Mullion and ANSI style options, have a 500,000 tested mechanical life, 304 stainless steel and an LED indicator light - Blue LED Indicator (Standby), Green LED Indicator (Sensation).



**Touchless Exit Button
NO/NC/COM**

NENACLBDB



**Touchless Exit Button
NO/NC/COM**

NENMCLSDB



**Touchless Exit Button
NO/NC/COM**

NENACLSDB



NEW IP65 TOUCHLESS EXIT BUTTONS

In the current environment and the "new normal", touchless solutions are becoming the preferred option. In addition to the new range of Matt Black buttons, Neptune Security Products have added four new IP65 Touchless Infrared Exit Buttons to the range. All the exit buttons have adjustable trigger state from 0.5-30sec or toggle mode output and an LED indicator light - Red LED Indicator (Standby), Green LED Indicator (Action). Colour can be reversed.



**Touchless Exit Button
NO/NC/COM**

NEITB25W



**Touchless Exit Button
NO/NC/COM**

NEITB68W



**Touchless Exit Button
NO/NC/COM**

NEITB58W



**Touchless Exit Button
NO/NC/COM**

NEITB98W



FREE DELIVERY!* for all orders over \$150 *Exclusions apply.



Security Tech Germany

SALTO
inspired access



locking for life



ASSA ABLOY



Neptune
Security Products

ADVANCED
DIAGNOSTICS

ADI
lockwise



Security Tech Germany

THE OFFICIAL PRODUCT CHAMPIONS WINNER 2020

LSC are proud to announce ABUS as the winner of the Official Product Champions award for 2020.

One of the largest and most respected news & media outlets in Europe, the "DER WELT" newspaper, surveyed over 800,000 people and asked them to rank everyday consumer product brands & companies. They asked: "Did the brand inspire you with the quality of their products?". Over 2000 companies were in the list, from over 200 industries. The survey respondents were asked to indicate if they agreed with the above question.

ABUS was ranked Number One out of all companies within the Security category.

What's far more impressive is that ABUS was ranked Number One overall, beating globally recognised household names including Samsung, Sony, Miele, and Lego!



Pictured: Christian Rothe, member of the ABUS management team

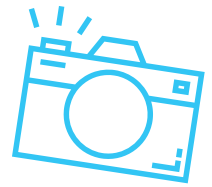
"This result is special in many ways. On the one hand, it is the judgment of our customers - i.e. the users of our products, who are protected by our solutions every day. There is no better "jury". On the other hand, it is about the hard currency of product quality and thus the reliability of our solutions. We are very grateful for this special form of recognition"

Christian adds: "The result encourages us for the future. In particular, we would like to thank our employees who are passionate about the brand every day and who made the award possible."

LSC and our customers in Australia congratulate ABUS. By choosing ABUS you and your customers have peace of mind. The strength of the brand, the quality and reliability in products have just been re-endorsed.



HAPPY CUSTOMERS



HOMEWATCH SECURITY (QLD)



Shane Pickard from Homewatch Security with his new Silca Futura Auto.

BLACKS LOCKSMITHS (QLD)



Phil, Dan & Darren [L-R] from Blacks Locksmiths with their new Silca Futura Auto.

ABBOTTS LOCKSMITHS (NSW)



George Vassilopoulos and Jarryd Polley from Abbots Locksmiths with their new Silca Triax Pro.

ARMAGUARD (VIC)



Nathan Worrall of Armaguard with the Silca Unocode 299 machine.

SPEEDY LOCKSMITHS (VIC)



Chris from Speedy Locksmiths loving his Silca Futura Edge.

BARRIER LOCKSMITHS (QLD)



Reif from Barrier Locksmiths with his new Silca Futura Pro.



SALTO Neo Cylinder

POWERED TO DO IT ALL

Part Code: NBA1100N00CSBN

**The most
efficient, secure,
and convenient
way of securing
buildings and
assets.**

saltoneo.saltosystems.com/



EASY RETROFITTING

Smart access for any door with a wide range of finishings.



INDOOR & OUTDOOR VERSION

All weather, IP66 protection.



LONG BATTERY LIFE

Up to 130,000 openings depending on operating mode



CROSS-PLATFORM COMPATIBILITY

SVN, SVN-Flex, BLUEnet Wireless, SALTO KS.



DIGITAL KEYS

BLE/NFC mobile-compatible electronic cylinder.



SALTO
inspired**access**

TERMS & CONDITIONS

Product features and pricing in this newsletter are subject to change without notice. Special promotional prices advertised here are for the month the newsletter has been published. However, some offers may commence on or extend beyond the promotional period. Most products have been photographed in-house and are identical to what you will receive. Information presented in this newsletter has been checked and is believed to be correct at the time of printing, however, errors and omissions may occur. LSC can not guarantee prices, specifications, or features of products that may change after printing.