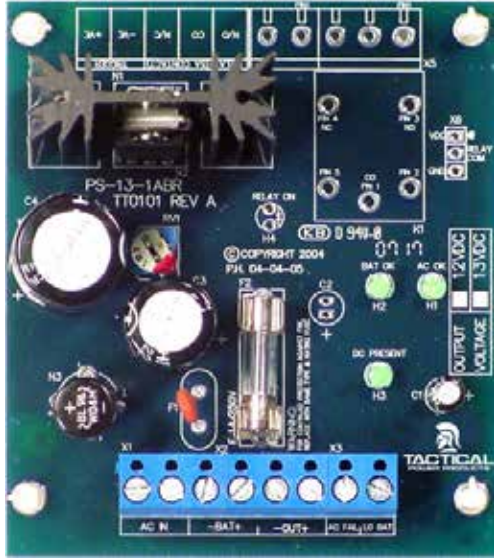


# PS13-1A DATASHEET



PS13-1A MODULE



## Specifications

Input:	16Vac 1.5A
Output:	13.8Vdc 1A
Dimensions:	83L x 72W x 60H
Weight:	75gm approx

The PS13-1A is a linear regulated power supply module designed to provide 13.8Vdc at 1A and features an onboard 90mA battery charger together with AC Fail & Low Battery open collector outputs which switch to 0V when activated.

Supplied with 4 x adhesive mounting feet, this module requires an approved 16Vac 1.5A plug pack (not supplied) eg Tactical Part No: 16VP/P. Output is short circuit protected by a 1A M205 Fuse - if replacement is required, use only a 1A Fuse.

Tactical Power Products

13.8Vdc 1A Power Module  
( Requires 16Vac 1.5A Plug Pack )w

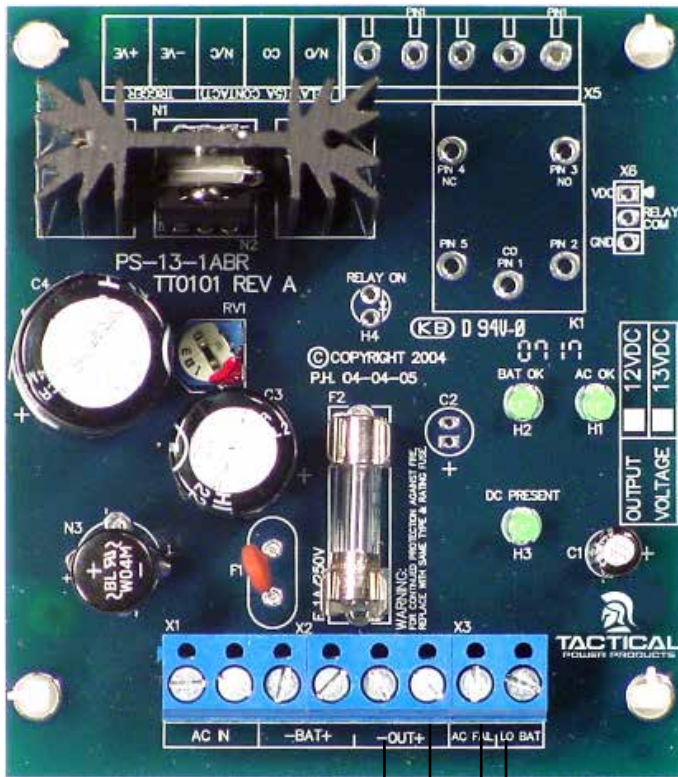
[www.tacpower.com.au](http://www.tacpower.com.au)

Tel +61 1300 822 769 [sales@tacpower.com.au](mailto:sales@tacpower.com.au)



PS13-1A

# Wiring Diagram (Typical) and Installation Notes

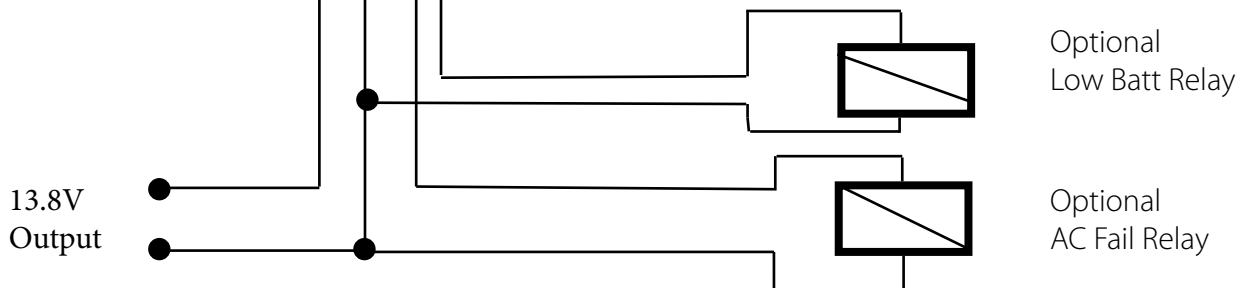


Proudly Australian



Designed & Manufactured

# PS13-1A



## Installation Notes:

- Always select a clean, dry environment for installation.
- PS13-1A may be installed using self adhesive stand-offs - ensure surface is clean before mounting
- Ensure adequate free air circulation around circuit board to avoid over-heating.
- If fuse requires replacement, determine cause of failure and replace only with M205 F 1A/250V.
- AC Fail & Low Battery outputs are open collector -external relays may be wired as above.
- AC Fail Relay coil will be energised whilst mains is connected.
- Low Battery Relay coil will be energised whilst battery voltage is above approx. 11V DC.
- Onboard Battery Charger can provide up to 90 mA - remember to consider this current when determining overall system current draw.
- Battery charge current (90 mA) should be subtracted from total power supply output (1A) to allow a discharged battery to be recharged after extended AC power outage